

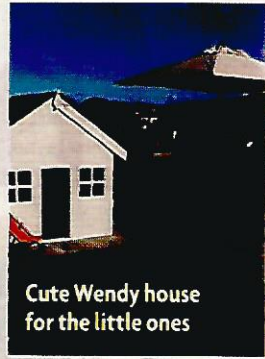
ners!



YOUR HOLIDAY

FAMILY GATHERING

Ifracombe House, Ifracombe, Devon



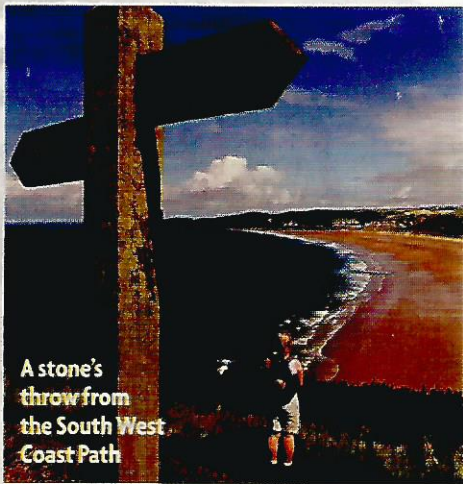
Cute Wendy house for the little ones

WHY Scenic at any time of year, the North Devon coast has something for all ages – as does this beautiful Victorian villa, which is just a hop from the South West Coast Path in Ifracombe. The

seven-bedroom property has all you need to make it a memorable family occasion. A Wendy house on the terrace is perfect for little ones, while the spacious sitting room, kitchen/diner and library mean the adults aren't falling over each other either. And if they are, take a trip to the endless sands at Woolacombe.

HOW MUCH Sleeps up to 13 people, and two-night stays cost from £1,330.

FIND OUT MORE Call 01452 715 373, or go to www.thewowhousecompany.com.



A stone's throw from the South West Coast Path



Split the group into barns

FRIENDS REUNION

The Barns at Belle Grove, Halesworth, Suffolk

WHY A reunion is a wonderful opportunity to catch up with friends. Belle Grove is brilliant for this, not just because it can host up to 22 people, but it also splits guests into two to six per barn – from the

cosy-for-a-couple Gate House with a four-poster, to the three-bedroom Upper Barn. Each barn on this former farm is generously equipped and decorated colourfully with oriental furnishings. The outdoors is deliberately untamed to encourage wildlife, with a pretty courtyard garden. It's not far from Southwold on the Suffolk coast, and your nearest pub is a mere 20-minute walk away.

HOW MUCH A week's stay costs from £505 per barn. Four-day lets are considered from late October until May (price on application).

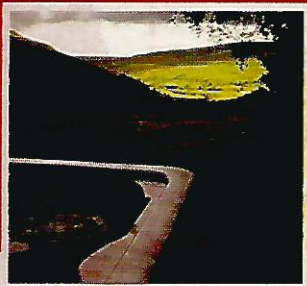
FIND OUT MORE Go to www.special-escapes.co.uk.



Each has a colourful oriental theme

Lovely Seat, Swaledale House, Swaledale, Yorkshire

WHY Crowd-free countryside, bracing walks, good books and quaint cottages – this is the stuff romantic breaks for two are made of. At these pint-sized properties in the Yorkshire Dales National Park, you get to escape with just your partner, or invite friends to rent the cottage next door. Cottages for Couples are the specialists in properties

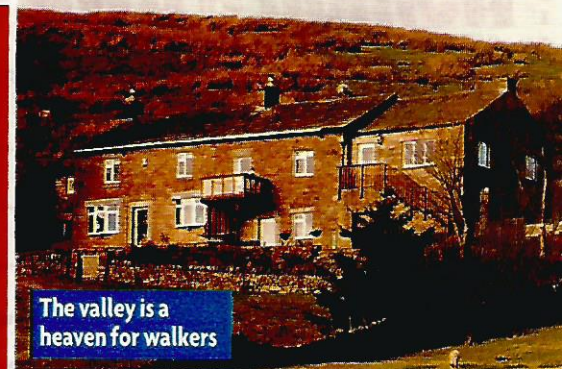


GROWN-UP GETAWAY

for two, but it's the terrace views over Upper Swaledale that makes this apartment, near Muker, stand out.

Heaven for walkers, the valley is dominated by dramatic peaks, carved by the River Swale. The cottage shares access to an outdoor hot tub. Plus there's five acres of meadow.

HOW MUCH Accommodates two people and costs from £300 a week. Off-peak, three to six-night



The valley is a heaven for walkers

stays are considered (price on application). **FIND OUT MORE** Go to www.cottagesforcouples.com.