



50 best winter weekends in

From a cosy cottage with a roaring fire to an island hotel with great walks and food, James Ellis picks the best places to stay

Cottages

1 Bewerley Hall Cottage Bewerley, Yorkshire

Yorkshire has won an award as Europe's Leading Destination, thanks in part to the gorgeous Dales countryside. You can sample it in this lovely beamed cottage in Nidderdale. It has local art on the walls, a wood-burning stove in the inglenook and an oak kitchen with Cath Kidston touches. Nearby is Pateley Bridge, a foodie paradise with award-winning butchers' and bakers' shops. **Details** Four nights' self-catering is from £350 for two (01765 688210, cottageinbewerley.com)

2 Swaledale Country Holidays Thwaite, Yorkshire

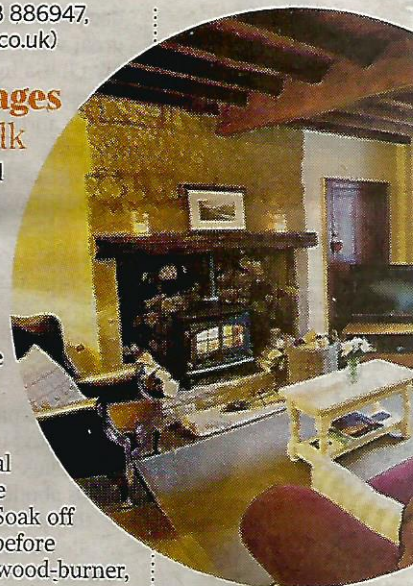
There's more gorgeous countryside surrounding Swaledale House — so much so that the view from its windows featured on the ITV programme *Britain's Favourite View*, while the walk over Kisdon Hill to Muker and Keld that starts here is in the Ramblers' top 50 in the UK. There's a choice of two apartments in the house — Lovely Seat has a wood-burner, open stone walling and a patio, while Kisdon has a magnificent Jacobean four-poster bed. **Details** Three nights' self-catering

is from £235 for two (01748 886947, swaledalecountryholidays.co.uk)

3 Cartshed Cottages Sharrington, Norfolk

North Norfolk is wonderful in the winter, with its blustery coastal walks under big skies on empty beaches. Set in the grounds of Sharrington Hall, a Jacobean manor house, is this quartet of one and two-bedroom cottages with a rustic-chic feel including beamed ceilings, oak floors covered in animal skins and with a soft palette of greys, lilacs and greens. Soak off stress in the roll-top baths before cuddling up in front of the wood-burner, then wrap up in blankets to stargaze as night falls.

Details Three night's self-catering is from £460 for two (www.j-escape.com/cartshed-cottages)



Bewerley Hall Cottage (1)